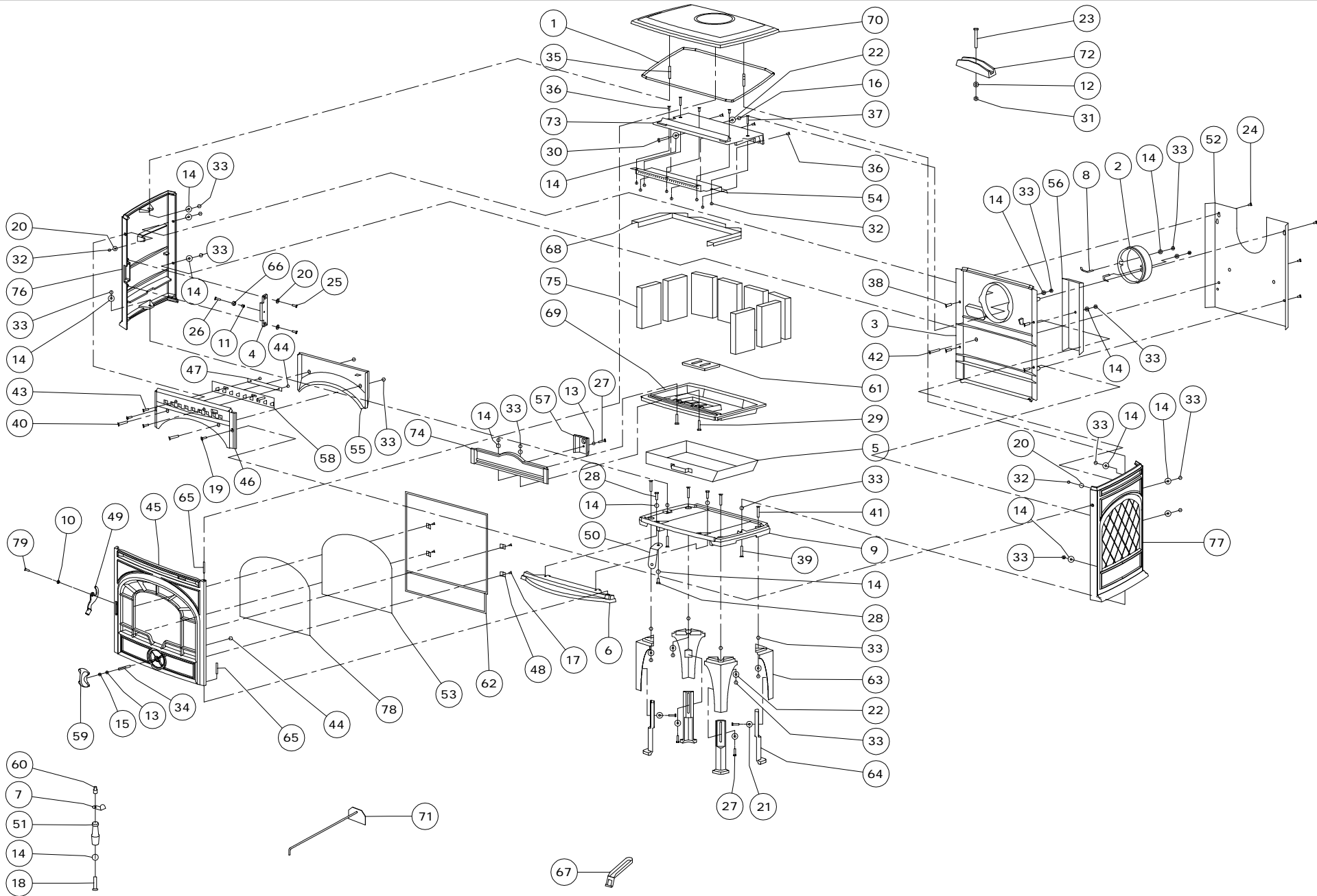




425CBN



NR 01.94319.000 HOUTKACHEL 425CBN

**ZIE TEKENING
09.94319.000**

1	04.26408.000	1M GLASVEZELKOORD Ø8 MM
2	03.00341.000	AANSLUITKRAAG Ø150UITW
3	03.02429.005	ACHTERWAND
4	03.03132.005	AFDEKPLAATJE
5	02.05201.000	ASLADE FOCUS
6	03.05616.005	ASVANG
7	03.06107.000	BEDIENINGSBEUGEL
8	03.07107.100	BEVESTIGINGSBEUGEL KRAAG
9	03.09359.002	BODEMPLAAT
10	03.13641.000	BUSJE MET KRAAG Ø12XØ6X5.8
11	03.13619.100	BUSJE SLUITSTUK TUL
12	03.16503.000	D125 Ø10XØ21 SLUITRING
13	03.16501.000	D125 Ø6XØ12 SLUITRING
14	03.16502.000	D125 Ø8XØ17 SLUITRING
15	03.16601.000	D137B Ø6 VEERRING GEWELFD
16	03.17102.000	D439 M8 LAGE ZESKANTMOER
17	03.18101.000	D7516D M5X10 PLATV.KK.SNIJSCHR
18	03.20307.000	D7985 M8X50 BOLCIL KK SCHROEF
19	03.18602.000	D7991 M6X20 VERZ.SCHR.BIZK
20	03.18701.000	D9021A Ø6XØ18 SLUITRING
21	03.18728.000	D9021A Ø8XØ25 GEZWART SLUITRING
22	03.18710.000	D9021A Ø8XØ25 SLUITRING
23	03.19328.000	D933 M10X75 ZESKANTTAPBOUT
24	03.19302.000	D933 M6X10 ZESKANTTAPBOUT
25	03.19304.000	D933 M6X16 ZESKANTTAPBOUT
26	03.19305.000	D933 M6X20 ZESKANTTAPBOUT
27	03.19306.000	D933 M6X25 ZESKANTTAPBOUT
28	03.19311.000	D933 M8X16 ZESKANTTAPBOUT
29	03.19314.000	D933 M8X30 ZESKANTTAPBOUT
30	03.19316.000	D933 M8X40 ZESKANTTAPBOUT
31	03.19406.000	D934 M10 ZESKANTMOER
32	03.19410.000	D934 M6 ZESKANTMOEREN
33	03.19401.000	D934 M8 ZESKANTMOER
34	03.19502.000	D939 M6X20 TAPEINDEN
35	03.19511.000	D939 M8X50 TAPEIND
36	03.19712.000	D963 M6X16 PLATV.SCHR.ZGS
37	03.19718.000	D963 M6X35 PLATV.SCHR.ZGS
38	03.19701.000	D963 M8X25 PLATV.SCHR.ZGS
39	03.19734.000	D963 M8X35 PLATV.SCHR.ZGS
40	03.19735.000	D963 M8X40 PLATV.SCHR.ZGS
41	03.19739.000	D963 M8X45 PLATV.SCHR.ZGS
42	03.19736.000	D963 M8X50 PLATV.SCHR.ZGS
43	03.20803.000	D966 M6X20 BOLVERZ KK SCHROEF
44	03.20001.000	D980 M6 ZELFB.MOER CLEVELOCK
45	03.15851.005	DEUR
46	03.24371.002	FRONT
47	03.25304.000	GELEIDINGSSTRIP
48	03.26101.000	GLASBEVESTIGING (20mm breed)
49	02.27022.000	GRENDEL
50	03.27301.000	HANDGREEPHOUDER
51	03.27506.000	HANDVAT HOUT
52	03.28010.000	HITTESCHILD RUG
53	03.26063.000	KERAMISCH GLAS

NR 01.94319.000 HOUTKACHEL 425CBN

**ZIE TEKENING
09.94319.000**

54 03.37206.000 LUCHTDOORLAAT
55 03.37333.002 LUCHTGELEIDER
56 03.37603.000 LUCHTKOKER SEC.LUCHT
57 03.37606.000 LUCHTKOKER VUURKORF
58 02.37949.000 LUCHTSCHUIF BOVEN
59 03.37968.005 LUCHTSCHUIF ONDER
60 03.46527.041 O46527.0#01 OPVULSTUK GEZWART
61 03.56214.000 ONTASSINGSROOSTER
62 04.26413.000 GLASVEZELKOORD 10MM HD ZWART
63 03.52219.005 POOT BOVEN
64 03.52220.002 POOT ONDER
65 03.58610.100 SCHARNIERPEN Ø6X45
66 03.13617.000 SLP15 BUSJE BORSTBOUT
67 03.27226.000 SLT5-/01 KOUDE HAND ASBAK
68 03.28861.000 STEENHOUDER
69 03.66511.002 STOOKROOSTER
70 03.69161.005 TOPPLAAT
71 02.59203.000 TREKSCHEPJE
72 03.72301.000 U-STUK (DEKSELTREKKER)
73 03.76104.002 VLAMPLAAT
74 03.77035.000 VUURKORF
75 03.77333.000 VUURVASTE STEEN
76 03.79562.005 ZIJWAND L
77 03.79563.005 ZIJWAND R
78 04.26406.000 GLASVEZELKOORD Ø6MM
79 03.20360.000 D7984 M6X16 LAGE CIL.KOP BIN.ZESK.

NR 01,94319.000 HOUTKACHEL 425CBN

**ZIE TEKENING
09,94319,000**

1	04.26408.000	1 M GLASSFIBER ROPE Ø 8
2	03,00341,000	COLLAR Ø150
3	03.02429.005	BACK PLATE 550CB
4	03.03132.005	COVERPART 425CB/GM
5	02.05201.000	ASHTRAY
6	03.05616.005	ASH LIP 425CB/GM
7	03,06107,000	OPERATING CLIP
8	03,07107,100	FIXING CLIP
9	03.09359.002	BOTTEMPLATE
10	03.13641.000	BUSHING WITH COLLAR Ø12XØ6X5,8
11	03.13619.100	LATCH BUSHING 10X8,5X6
12	03.16503.000	WASHER DIN 125 Ø10xØ21
13	03.16501.000	WASHER DIN 125 Ø6xØ12
14	03.16502.000	WASHER DIN 125 Ø8x17
15	03.16601.000	SPRING WASHER DIN 137B Ø6
16	03,17102,000	NUT DIN 439 M8
17	03.18101.000	SCREW DIN 7516D M5x10
18	03.20307.000	SCREW DIN 7985 M8X50
19	03.18602.000	SCREW DIN 7991 M6x20
20	03.18701.000	WASHER DIN 9021A Ø6XØ18
21	03.18728.000	WASHER DIN 9021A Ø8XØ25 BLACK
22	03.18710.000	WASHER DIN 9021A Ø8XØ25
23	03.19328.000	BOLT DIN 933 M10x75
24	03.19302.000	BOLT DIN 933 M6x10
25	03.19304.000	BOLT DIN 933 M6x16
26	03.19305.000	BOLT DIN 933 M6x20
27	03.19306.000	BOLT DIN 933 M6x25
28	03.19311.000	BOLT DIN 933 M8x16
29	03.19314.000	BOLT DIN 933 M8x30
30	03.19316.000	BOLT DIN 933 M8x40
31	03.19406.000	NUT DIN 934 M10
32	03.19410.000	NUT DIN 934 M6
33	03.19401.000	NUT DIN 934 M8
34	03.19502.000	STUD DIN 939 M6x20
35	03.19511.000	STUD DIN 939 M8x50
36	03.19712.000	SCREW DIN 963 M6x16
37	03.19718.000	SCREW DIN 963 M6x35
38	03.19701.000	SCREW DIN 963 M8x25
39	03.19734.000	SCREW DIN 963 M8x35
40	03.19735.000	SCREW DIN 963 M8x40
41	03.19739.000	SCREW DIN 963 M8x45
42	03.19736.000	SCREW DIN 963 M8x50
43	03.20803.000	SCREW DIN 966 M6X20
44	03.20001.000	LOCKING NUT DIN 980 M6
45	03.15851.005	DOOR 425CB CLASSIC NO
46	03.24371.002	FRONT 550CB
47	03,25304,000	GUIDE PLATE
48	03.26101.000	GLASS RETAINER (20mm)
49	02.27022.000	LATCH 250CB
50	03,27301,000	HANDLE HOLDER
51	03,27506,000	HANDLE WOOD
52	03.28010.000	HEATSHIELD
53	03.26063.000	CERAMIC GLASS 550CB

NR 01,94319,000 HOUTKACHEL 425CBN

**ZIE TEKENING
09,94319,000**

54	03,37206,000	SEC AIR DISTRIBUTION PLATE
55	03,37333,002	AIR GUIDE
56	03,37603,000	AIRDUCT SEC.AIR
57	03,37606,000	AIR CHANNEL (LOG RETAINER)
58	02,37949,000	AIR CONTROL UP
59	03,37968,005	AIR CONTROL DOWN 250
60	03,46527,041	CONNECTOR PIECE
61	03,56214,000	GRATE
62	04,26413,000	1 M GLASSFIBER ROPE Ø 10
63	03,52219,005	LEG UP
64	03,52220,002	LEG DOWN
65	03,58610,100	CLEVIS PIN Ø6X45
66	03,13617,000	SLP15 BUSHING 2100/2200
67	03,27226,000	COLD HAND ASHPAN
68	03,28861,000	FIRE BRICK HOLDER 55OCB
69	03,66511,002	FLOOR FIREPLACE
70	03,69161,205	TOPPLATE 425CB/GM
71	02,59203,000	SCRAPER 600
72	03,72301,000	U-PIECE (COVER)
73	03,76104,102	BAFFLE PLATE GEM 500
74	03,77035,000	LOG RETAINER
75	03,77346,000	FIRE BRICK 500GH
76	03,79562,005	SIDE L 425CB/GM
77	03,79563,005	SIDE R 425CB/GM
78	04,26406,000	1 M GLASSFIBER ROPE Ø 6
79	03,20360,000	SCREW DIN7984 M6X16