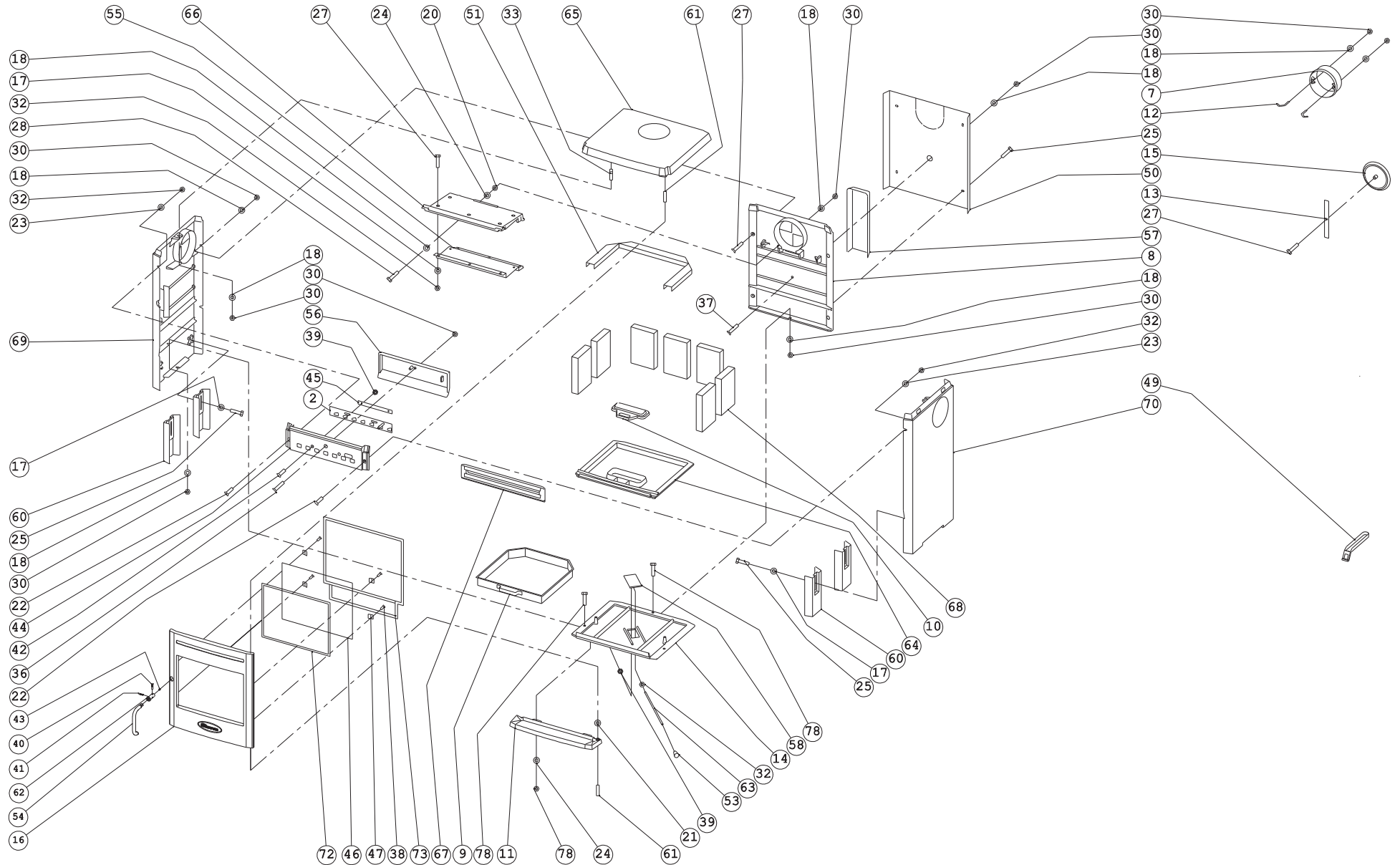




09.94201.000 | 15/12/09

350CB No



NR.	01.94201.000	STOVE 350CB
1	02.37329.000	ARIGUIDE/FRONT 350 SAM.
2	02.37937.000	DRAFT CONTROL (COMPLETE) 350
3	02.37938.000	DRAFT CONTROL BOTTEM 350 (COMPLETE)
4	02.59203.000	SCRAPER 600
5	02.66507.000	FIRE GRATE 350CB
6	02.76118.000	BAFFLE PLATE 350CB
7	03.00326.000	COLLAR Ø125 EXT. 40CB
8	03.02420.000	BACK 350CB
9	03.05215.000	806 ASHTRAY 2000/2100/2200
10	03.05402.000	ASHCOVER 350CB
11	03.05606.000	ASHLIP 350CB
12	03.07107.100	HOLDING BRACE COLLAR
13	03.07412.000	HOLDING BRACE 500GA
14	03.09341.100	BOTTEM PLATE 350CB
15	03.15316.000	COVER 40CB (ROUND)
16	03.15717.300	DOOR 350CB
17	03.16501.000	D125 Ø6XØ12 WASHER
18	03.16502.000	D125 Ø8XØ17 WASHER
19	03.16503.000	D125 Ø10XØ21 WASHER
20	03.17102.000	D439 M8 NUT LOW
21	03.17901.000	D7349 Ø6,4XØ17X3 WASHER
22	03.18604.041	D7991 M6X25 SCREW
23	03.18701.000	D9021A Ø6XØ18 WASHER
24	03.18710.000	D9021A Ø8XØ25 WASHER
25	03.19303.041	D933 M6X12 BOLT
26	03.19305.000	D933 M6X20 BOLT
27	03.19306.000	D933 M6X25 BOLT
28	03.19320.000	D933 M8X60 BOLT
29	03.19328.000	D933 M10X75 BOLT
30	03.19401.000	D934 M8 NUT
31	03.19406.000	D934 M10 NUT
32	03.19410.000	D934 M6 NUT
33	03.19508.000	D939 M8X25 STUD
34	03.19712.000	D963 M6X16 SCREW
35	03.19716.000	D963 M6X25 SCREW
36	03.19734.000	D963 M8X35 SCREW
37	03.19736.000	D963 M8X50 SCREW
38	03.19801.041	D965-H M5X10 SCREW
39	03.20001.000	D980 M6 NUT CLEVELOCK **
40	03.20406.000	D1472 Ø6X24
41	03.20412.000	D1472 Ø4X20
42	03.20803.000	D966 M6X20 SCREW
43	03.21701.041	D916 M6X6 GRUBSCREW
44	03.24355.000	FRONT 350CB
45	03.25303.000	GUIDE PLATE DRAUGHT CONTROL 350CB

NR.	01.94201.000	STOVE 350CB
46	03.26058.000	GLASS 350CB 342X273X4
47	03.26101.041	GLASRETAINER 20X20MM
48	03.27205.000	HANDLE SCRAPER 600
49	03.27226.000	SLT5-/01 COLD HAND ASHTRAY
50	03.28038.100	HEATSHIELD BACK 350CB
51	03.28843.000	STONE HOLDER 350CB
52	03.33020.000	KNOB GG 2510S
53	03.33023.100	KNOB AIRCONTROL 350CB *Z
54	03.34107.000	COLD HAND 350/360
55	03.37215.000	AIR DISTRIBUTION PLATE 350CB
56	03.37329.000	AIRGUIDE 350CB
57	03.37603.000	AIRDUCT SEC AIR 700
58	03.37937.000	DRAFT CONTROL TOP 350CB
59	03.37938.000	DRAFT CONTROL BOTTEM 350CB
60	03.52211.000	LEG 350CB
61	03.58610.100	HINGE PIN Ø6X45 *Z
62	03.64282.141	LOCKING PIECE 350/360
63	03.65410.000	ROD AIRCONTROL 350CB *Z
64	03.66507.000	FIRE GRATE 350CB
65	03.69129.000	TOPPLATE 350CB
66	03.76118.000	BAFFLE PLATE 350CB
67	03.77021.000	LOGGUARD 350CB
68	03.77346.000	VERMICULITE STONE 350/360/500/550/..
69	03.79545.000	SIDE L 350CB
70	03.79546.000	SIDE R 350CB
71	04.14404.000	PLAT 16X3 ST37-2K
72	04.26406.000	GLASSFIBERROPE Ø6MM
73	04.26408.000	GLASSFIBERROPE Ø8MM
74	04.26413.000	GLASSFIBERROPE Ø10MM ZWART
75	04.55606.000	ST37-2K DIAM 6
76	04.66701.000	PLAT 20X3 WG 1.0038
77	04.67213.100	LABEL
78	03.19313.000	D933 M8X25 BOLT